



# ***HOTEL POLOMAX***

ALLAHABAD • JABALPUR



**SLEEP HAPPY**



**EAT HAPPY**





**TRAVEL HAPPY**

# ABOUT HOTEL POLO MAX



## SLEEP HAPPY

Allahabad:66   
Jabalpur: 45 

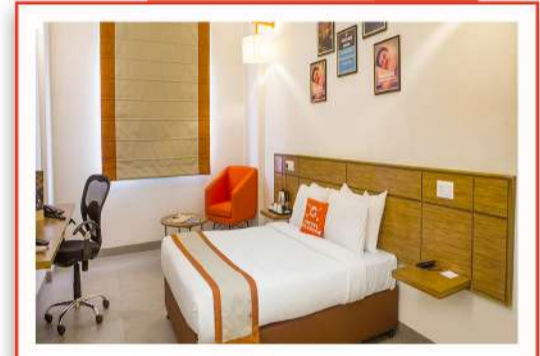
## MAX QUEEN ROOM

Aesthetically designed airconditioned rooms ideal for Two Adults ensure a relaxing sleep experience in our *MAXREST* bed. These are equipped with *MAXREST* Beds



## MAX COMFORT ROOM

Aesthetically designed airconditioned rooms ideal for Two Adults ensure a relaxing sleep experience in our *MAXREST* Bed. These rooms are equipped with Grohe Bathware *MAX POWER* Showers, Full Length Mirror, Ergonomic Chair, Ample charging points, Fast & Free WiFi.



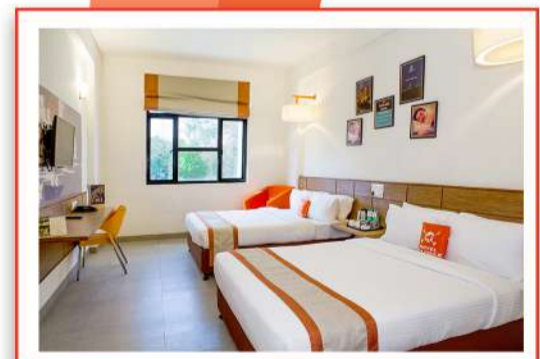
## MAX CLUB ROOM

Aesthetically designed airconditioned rooms ideal for Three Adults ensure a relaxing sleep experience in our *MAXREST* Bed. These rooms are equipped with Grohe Bathware *MAX POWER* Showers, Full Length Mirror, Ergonomic Chair, Ample charging points, Fast & Free WiFi.



## MAX FAMILY ROOM

Aesthetically designed airconditioned rooms ideal for Four Adults ensure a relaxing sleep experience in our *MAXREST* Bed. These rooms are equipped with Grohe Bathware *MAX POWER* Showers, Full Length Mirror, Ergonomic Chair, Ample charging points, Fast & Free WiFi.



## AMENITIES

- ✓ *MAXREST* Beds
- ✓ *MAX POWER* Showers
- ✓ *MAXREST* Mattresses
- ✓ 3 charging Points for Mobile and Laptop
- ✓ Central Air conditioning
- ✓ Safe deposit box in room
- ✓ In Room Dining
- ✓ Operator wake up call
- ✓ Ergonomic Chair
- ✓ Tea/ Coffee maker
- ✓ High-speed complimentary wi-fi
- ✓ Daily Newspaper
- ✓ Hair Dryer on request





# EAT HAPPY



## BANQUET FACILITIES

The Darbar Hall I & II of Hotel Polo Max, Allahabad & Jabalpur are perfect destinations for any Social & Corporate event with a capacity range of 200-250 people (Allahabad) and 100-150 people (Jabalpur).

Enjoy State of the Art facilities, Creative Menu selection, Personalized Service and great value.



## SITING ARRANGEMENT FOR BANQUETS

### ALLAHABAD

1. CLUSTER- 40 pax
2. THEATER- 100 pax
3. "U" SHAPE- 30 pax
4. BOARD ROOM - 25 pax
5. CASUAL- 200-300 pax

### JABALPUR

1. CLUSTER- 40 pax
2. THEATER- 100 pax
3. "U" SHAPE- 30 pax
4. BOARD ROOM - 25 pax
5. CASUAL- 100-200 pax

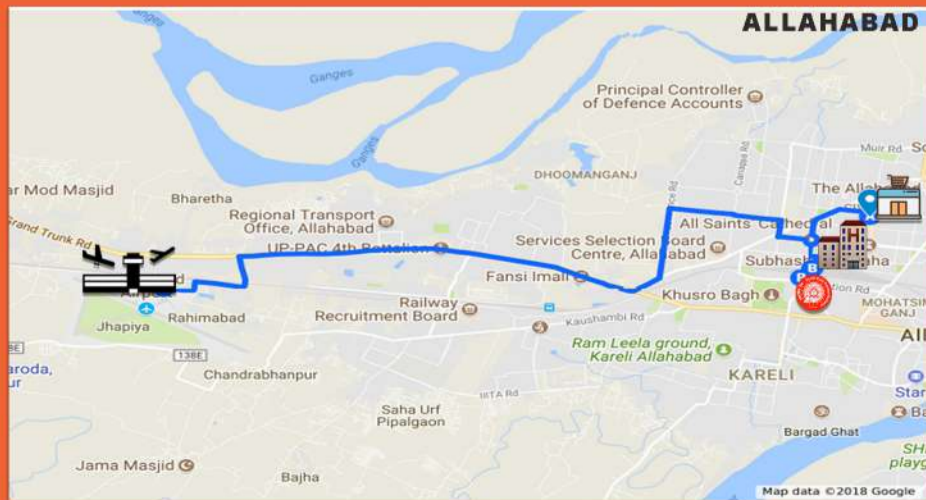
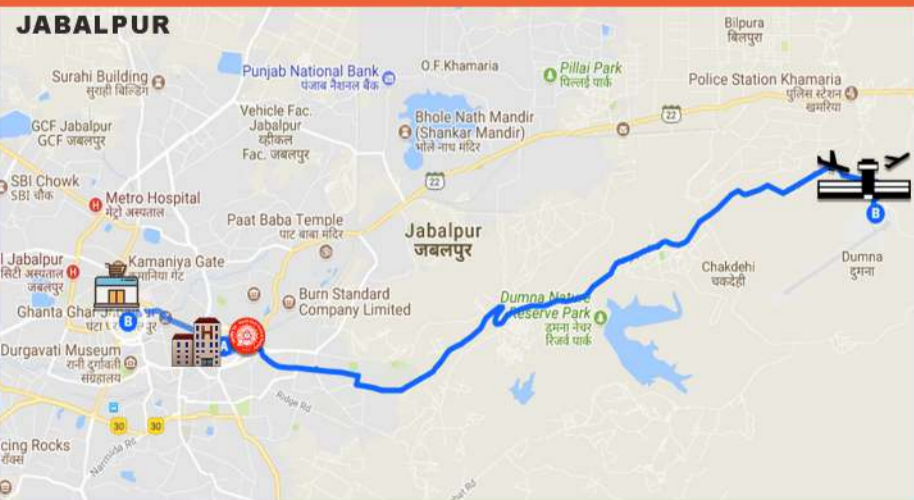


## MUMBAI MASALA

A Brightening and Inviting all day Dining Bollywood Themed Multi-Cuisine restaurant that offers an eclectic all day Dining Menu including Indian, Chinese and Continental. Indulge in the wholesome breakfast buffet, served daily to be chosen from a wide range of North Indian, South Indian, Asian and Western Delicacies.



# TRAVEL HAPPY



THE BEST RATE IS ALWAYS ON

[www.hotelpolomax.com](http://www.hotelpolomax.com)

BOOK DIRECT TO AVAIL THE BEST

## Hotel Polomax Allahabad

Multi Functional Complex  
Civil Line Side  
Railway Station Compound  
Allahabad- 211001 (UP)

## Hotel Polomax Jabalpur

Multi Functional Complex  
Civil Line Side,  
Railway Station Compound  
Jabalpur- 482001 (MP)